

ST. JOSEPH LAND - CR 133

720 15TH AVE NE | SAINT JOSEPH, MN 56374



FOR SALE - 3.32 ACRES
\$325,000 | \$2.25 PSF

PROPERTY DESCRIPTION

- + +/-3.32 acres of developable property
- + Lot enjoys visibility and easy access for a wide range of businesses.
- + Located on heavily traveled CR 133

Neighboring Businesses

- + McDonalds
- + Coborn's Grocery
- + O'Reilly Auto Parts
- + CentraCare Clinic
- + St. Joe - Industries West - Industrial Park

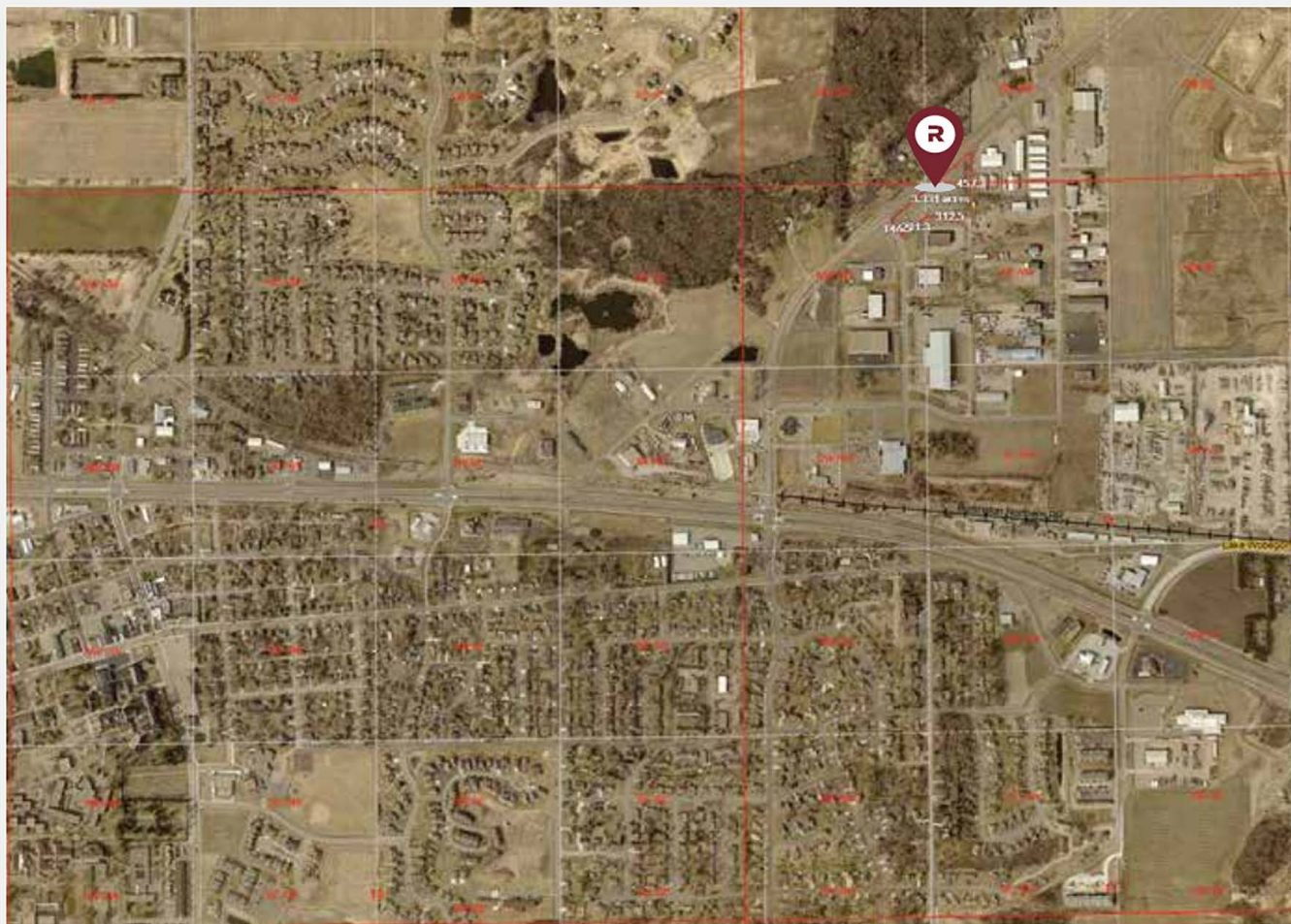


Utilities

- + Water & Sewer: City of St. Joseph
- + Electricity: Stearns Electric
- + Gas: Xcel Energy

Property & Pricing

- + Parcel ID R 84.53470.0240
- + Taxes 2022: \$5,454
- + Zoning; 3a-
Commerical/Industrial/Public Utility



CONTACT:
320.252.0404
RICEPROPERTIES.COM

FOR SALE
\$325,000 | \$2.25 PSF

BEN COPPERTHITE

Real Estate Broker
Mobile: 612.242.4869
ben.copperthite@riceproperties.com

We obtained the information above from sources we believe to be reliable. However, we do not claim to make a guarantee, warranty or representation about such information. It is submitted subject to the possibility of errors, omissions, change of price, rental or other conditions, prior sale, lease or financing, or withdrawal without notice. You and your tax and legal advisors should conduct your own investigation of the property and transaction.