

**Plaza Park Retail**  
159-183 7th Ave South  
Waite Park, MN 56387

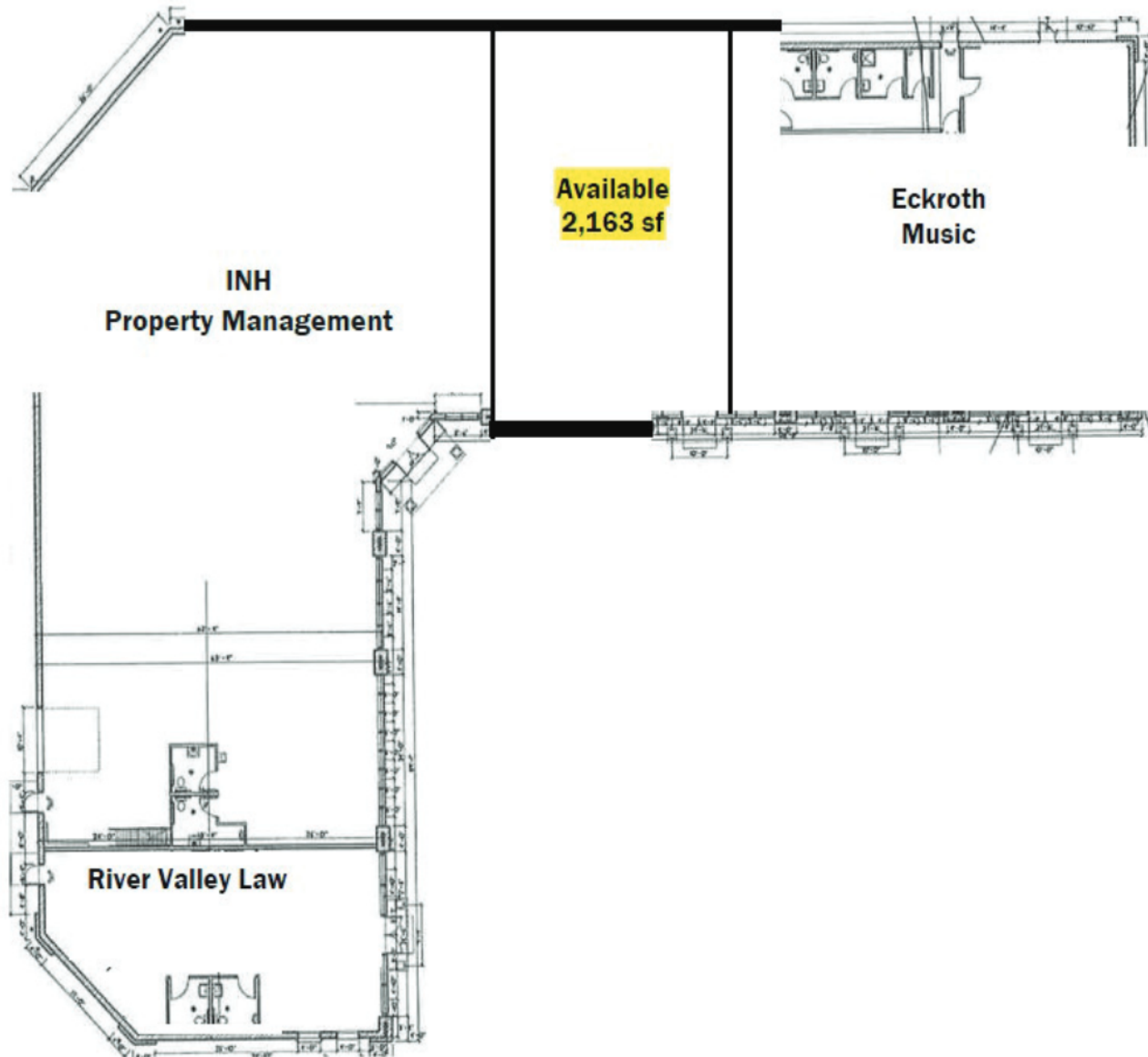


## PROPERTY DESCRIPTION

Space consists of 2,163 rentable square feet of professional office and/or retail. Space provides open reception, private offices, break room, restroom and open showroom. Centrally located on heavily traveled 7th Ave south, a major cross street between Division Street and 2nd Ave.

**FOR LEASE**  
**Lease Rate:**  
**\$15.00 psf**  
**CAM (2022):**  
**\$7.50 psf**

# Plaza Park Court

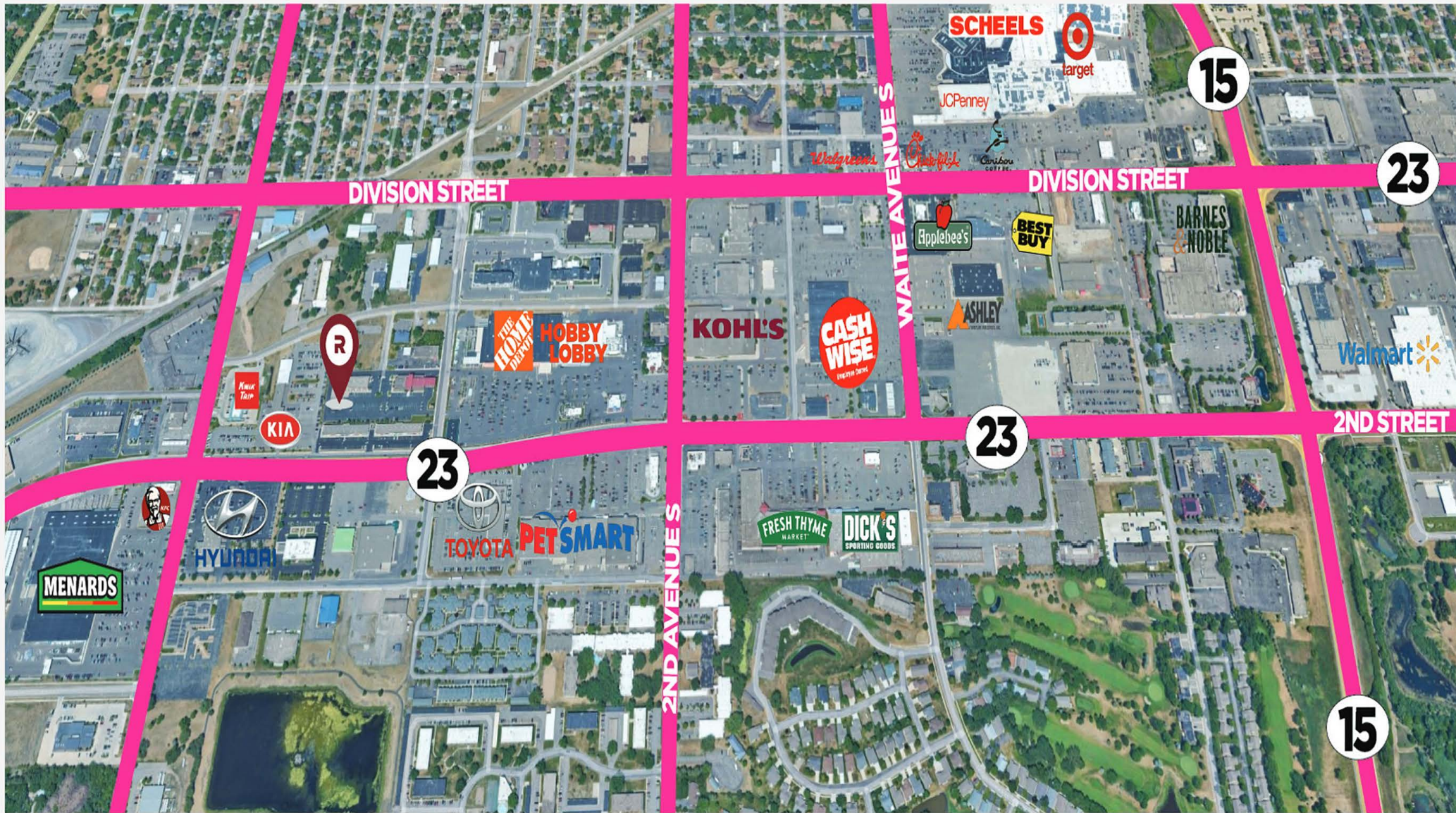


## Building Summary

- + Building Size: 16,343 sf
- + Total Available: 2,163 sf
- + Parking: 90 surface stalls, 6 per/ 1,000 sf
- + Year Built: 2005
- + Tenancy: INH Property Management, Ekroth Music and River Valley Law
- + Lease Rates: \$14-16 psf Net
- + CAM/Taxes (2022) \$7.50psf

CoStar (2022)	1-mile	3-mile
Population	7,607	47,100
Pop. Growth	+6.65%	+6.48%
HH	3,528	10,772
Daytime Emp.	13,252	40,795





**CONTACT:**

**320.252.0404**

**RICEPROPERTIES.COM**

**BEN COPPERTHITE**

Real Estate Broker

Mobile: 612.242.4869

[ben.copperthite@riceproperties.com](mailto:ben.copperthite@riceproperties.com)

We obtained the information above from sources we believe to be reliable. However, we do not claim to make a guarantee, warranty or representation about such information. It is submitted subject to the possibility of errors, omissions, change of price, rental or other conditions, prior sale, lease or financing, or withdrawal without notice. You and your tax and legal advisors should conduct your own investigation of the property and transaction.



