

Foley Development Land

Located on heavily traveled HWY 25 & HWY 23



**FOR SALE - 7.70 ACRES
\$495,000 | \$1.48 PSF**

PROPERTY DESCRIPTION

7.70 acres of development property located on Highway 25 and Highway 23 in Foley, MN. Property is ideal for an automotive or accessory dealership. This site is easy to access and provides excellent visibility for a wide range of businesses. This parcel of land can also be divided.

Neighboring Businesses

- + McDonalds
- + Coborn's Grocery
- + Murphy Chevrolet
- + Super America
- + Kent Precision Foods

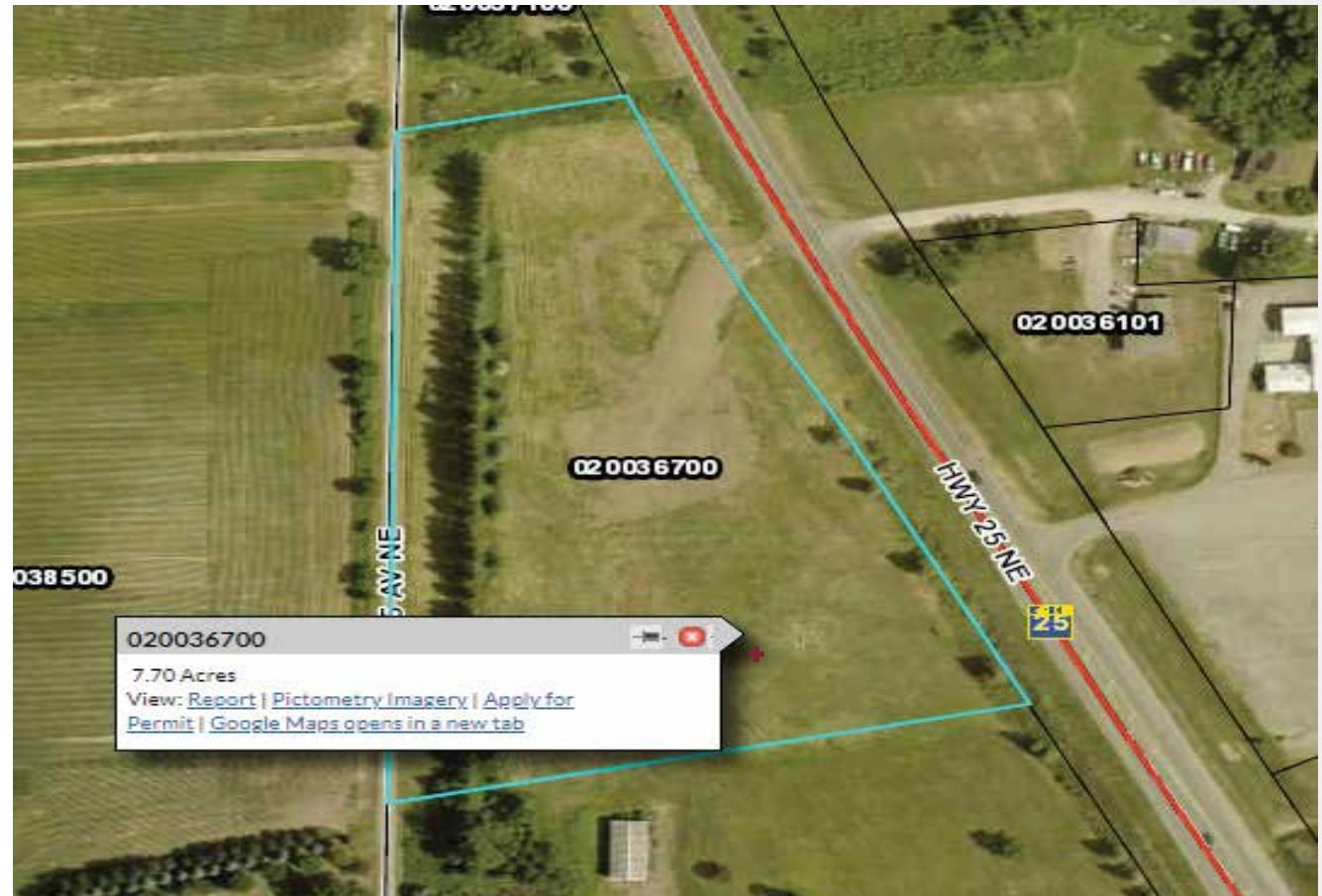


Utilities

- + Water & Sewer: City of Foley
- + Electric: Xcel Energy
- + Gas: Xcel Energy
- + Rough Graded

Property & Pricing

- + Parcel ID R 02.00367.00
- + Taxes 2022: \$4,536.00
- + Call for further details



CONTACT:
320.252.0404
RICEPROPERTIES.COM

FOR SALE
\$495,000 | \$1.48 PSF

BEN COPPERTHITE

Real Estate Broker
Mobile: 612.242.4869
ben.copperthite@riceproperties.com

We obtained the information above from sources we believe to be reliable. However, we do not claim to make a guarantee, warranty or representation about such information. It is submitted subject to the possibility of errors, omissions, change of price, rental or other conditions, prior sale, lease or financing, or withdrawal without notice. You and your tax and legal advisors should conduct your own investigation of the property and transaction.