

# COMMERCIAL LOTS FOR SALE

County Road 75 | St. Joseph, MN



**FOR SALE  
MULTIPLE LOTS**

## PROPERTY PRICING

**LOT 3/BLOCK 1: 45,738 SF  
\$200,000 / \$4.50 PSF**

**LOT 1/BLOCK 2: 44,431 SF  
\$190,000 / \$4.28 PSF**

**LOT 2/BLOCK 2: 43,560 SF  
\$160,000 / \$3.67 PSF**

**LOT 3/BLOCK 2: 43,560 SF  
\$130,000 / \$2.98 PSF**

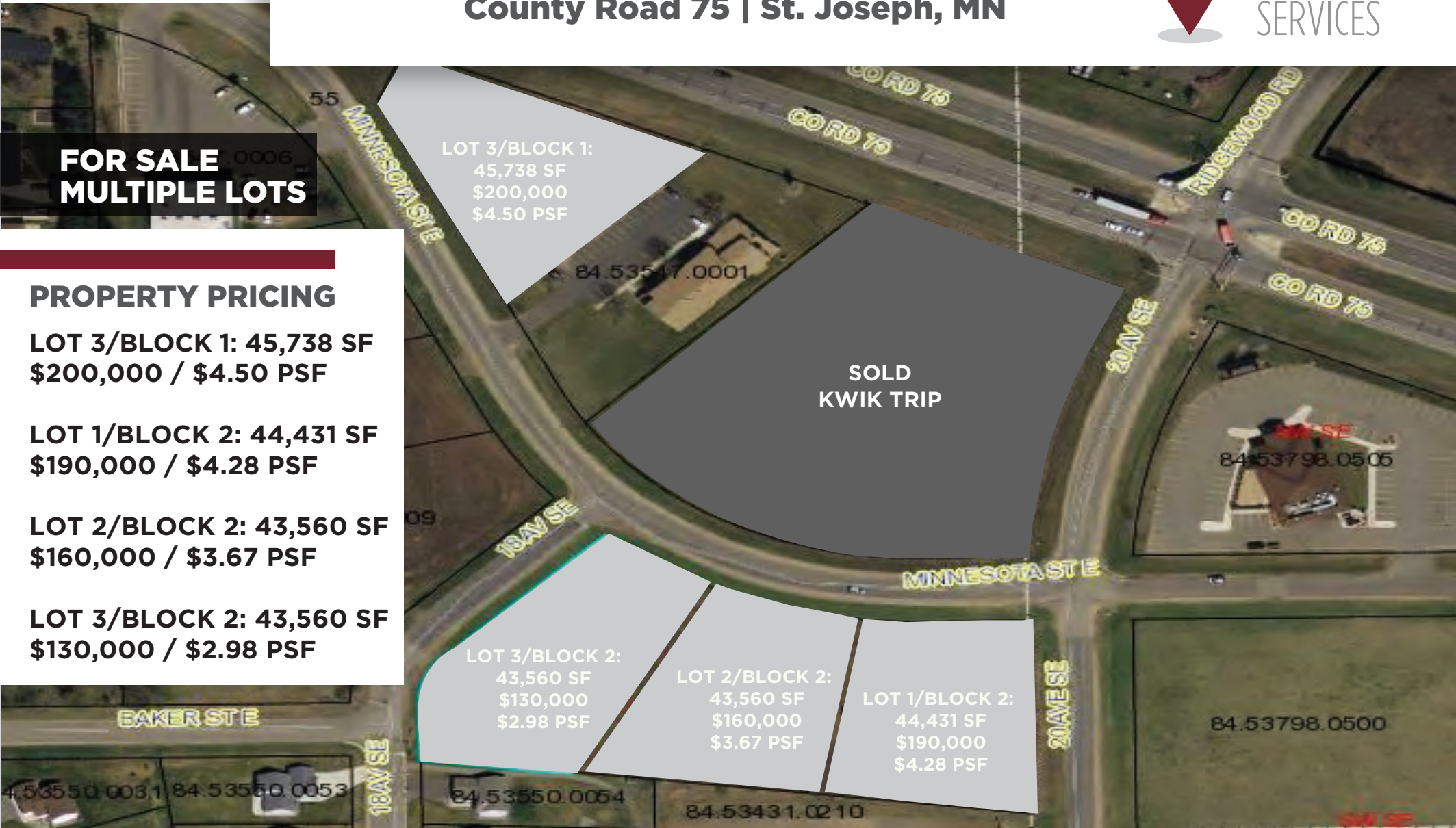
LOT 3/BLOCK 1:  
45,738 SF  
\$200,000  
\$4.50 PSF

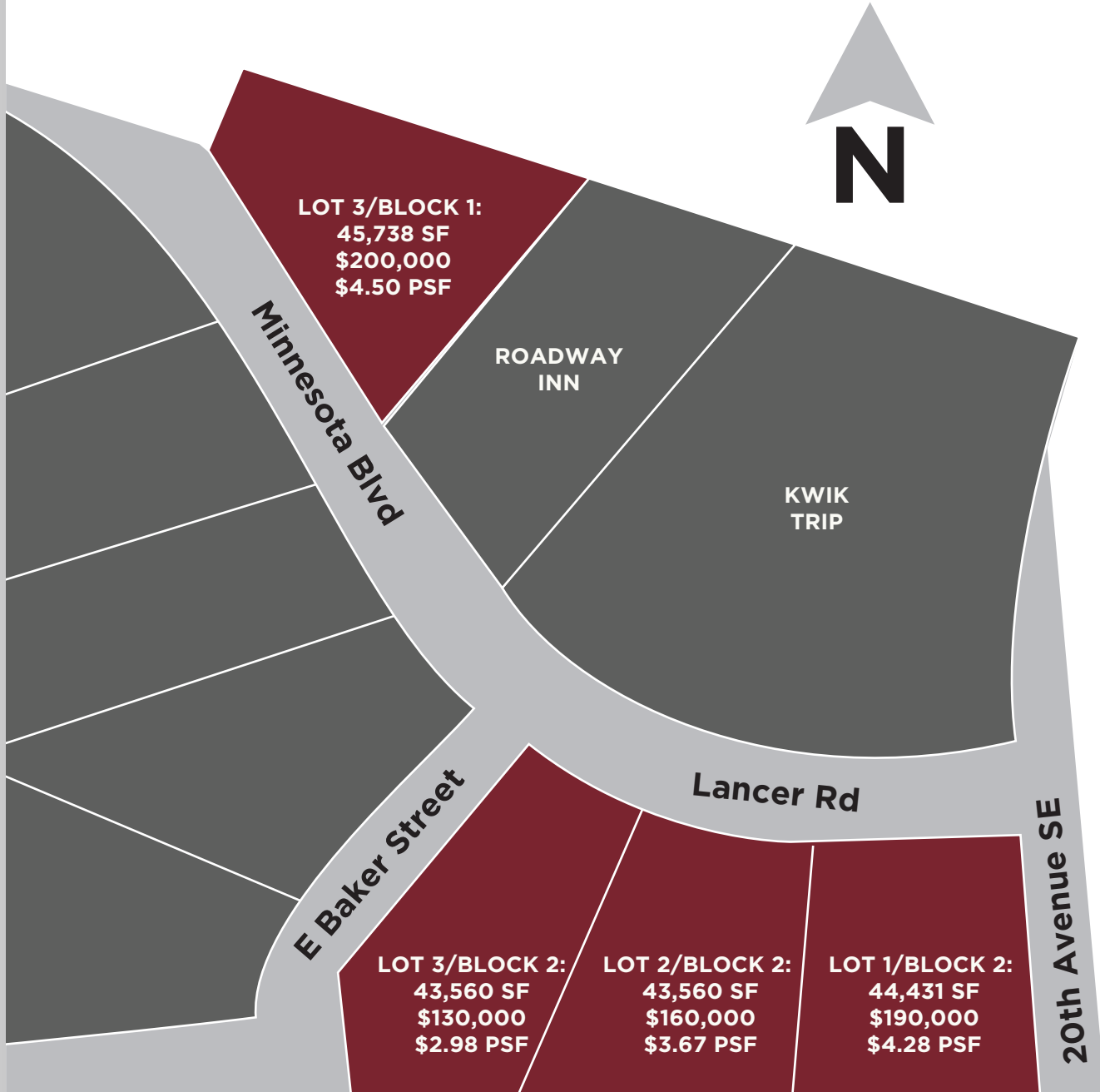
**SOLD  
KWIK TRIP**

LOT 3/BLOCK 2:  
43,560 SF  
\$130,000  
\$2.98 PSF

LOT 2/BLOCK 2:  
43,560 SF  
\$160,000  
\$3.67 PSF

LOT 1/BLOCK 2:  
44,431 SF  
\$190,000  
\$4.28 PSF





## PROPERTY LOCATION

- + Multiple commercial lots available
- + Lots enjoy excellent visibility and easy access
- + Located on heavily traveled CR 75
- + Located in one of the largest growth areas in Central MN, St. Cloud, MSA

## UTILITIES

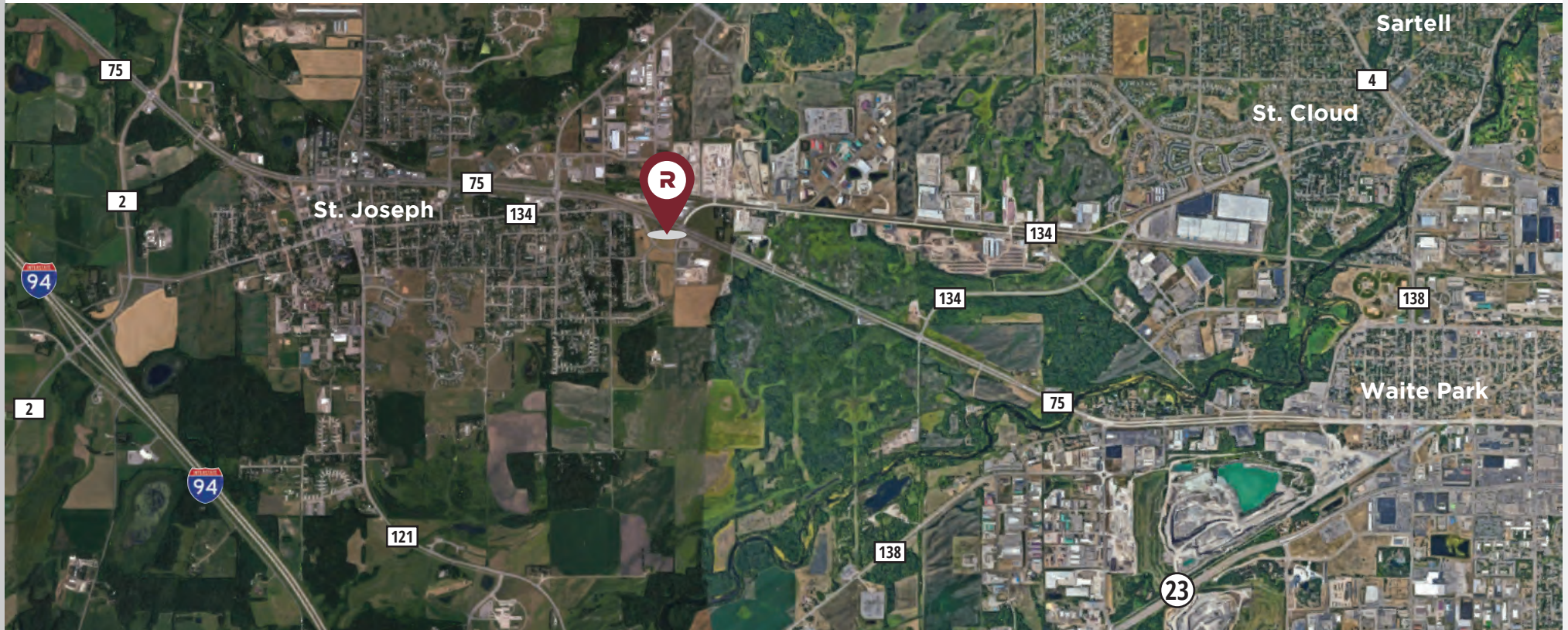
- + Water & Sewer: City of St. Joseph
- + Electricity: Stearns Electric
- + Gas: Xcel Energy

## NEARBY BUSINESSES

- + CentraCare Medical Clinic
- + Coborn's Grocery
- + US Army Reserve
- + Kwik Trip
- + Numerous hotels & restaurants
- + Mult-Family/Residential



## SITE MAP



**CONTACT:**  
**320.252.0404**  
**RICEPROPERTIES.COM**



**CASEY O'MALLEY**  
Real Estate Broker  
Mobile: 320.260.6815  
casey.omalley@riceproperties.com

We obtained the information above from sources we believe to be reliable. However, we do not claim to make a guarantee, warranty or representation about such information. It is submitted subject to the possibility of errors, omissions, change of price, rental or other conditions, prior sale, lease or financing, or withdrawal without notice. You and your tax and legal advisors should conduct your own investigation of the property and transaction.