



RICE
REAL ESTATE
SERVICES

FOR LEASE

Northern Management Building

1725 West St. Germain St
St. Cloud, MN 56301

4,560 sqft Available



LEASE PRICE **\$14 — \$16 PSF GROSS**

FOR MORE INFO: RICEPROPERTIES.COM | 320.260.6815

CONTACT:

CASEY O'MALLEY
Real Estate Broker | 320.260.6815
casey.omalley@riceproperties.com

CURRAN POGANSKI
Real Estate Agent | 320.291.9297
curran.poganski@riceproperties.com

We obtained the information above from sources we believe to be reliable. However, we claim to make a guarantee, warranty or representation about such information. It is submitted subject to the possibility or errors, omissions, change of price, rental or other conditions, prior sale, lease or financing, or withdrawal without notice. You and your tax and legal advisors should conduct your own investigation of the property and transaction.



RICE
REAL ESTATE
SERVICES

FOR LEASE

Northern Management Building

1725 West St. Germain St
St. Cloud, MN 56301

4,560 sqft Available

Property Description:

Northern Management Office Building is conveniently located in the middle of St. Cloud, at the intersection of Washington Memorial Drive and West St. Germain St. The building is two stories tall, offering great signage visibility to Division Street traffic. This building offers ample parking and easy access.

Property Location:

Available for lease is 4,560 of turn key office space. The space includes 2 large conference rooms, 5 executive offices, plenty of space for work stations and a full kitchenette. Main floor has common men's and women's restrooms, 2nd floor has 1 uni-sex restroom. Two tenants currently lease the remainder of the building (1,692 sqft).



LEASE PRICE **\$14 — \$16 PSF GROSS**

FOR MORE INFO: RICEPROPERTIES.COM | 320.260.6815

CONTACT:

CASEY O'MALLEY
Real Estate Broker | 320.260.6815
casey.omalley@riceproperties.com

CURRAN POGANSKI
Real Estate Agent | 320.291.9297
curran.poganski@riceproperties.com

We obtained the information above from sources we believe to be reliable. However, we claim to make a guarantee, warranty or representation about such information. It is submitted subject to the possibility of errors, omissions, change of price, rental or other conditions, prior sale, lease or financing, or withdrawal without notice. You and your tax and legal advisors should conduct your own investigation of the property and transaction.



RICE
REAL ESTATE
SERVICES

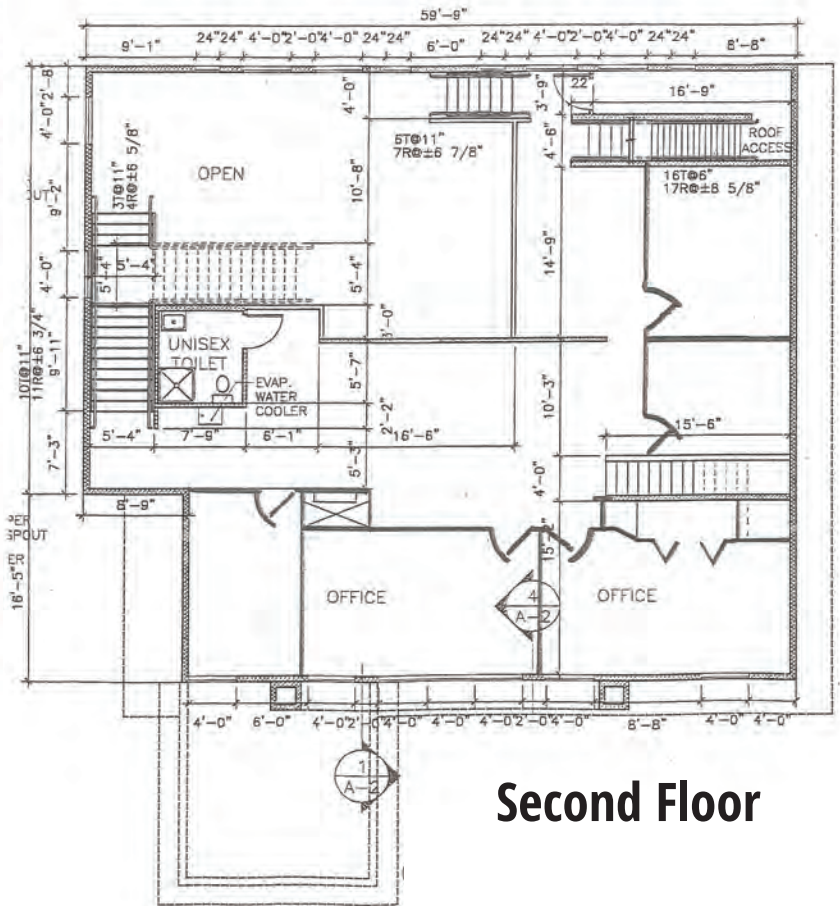
FOR LEASE

Northern Management Building

1725 West St. Germain St
St. Cloud, MN 56301

4,560 sqft Available

Floorplan:



LEASE PRICE \$14 — \$16 PSF GROSS

FOR MORE INFO: RICEPROPERTIES.COM | 320.260.6815

CONTACT:

CASEY O'MALLEY
Real Estate Broker | 320.260.6815
casey.omalley@riceproperties.com

CURRAN POGANSKI
Real Estate Agent | 320.291.9297
curran.poganski@riceproperties.com

We obtained the information above from sources we believe to be reliable. However, we claim to make a guarantee, warranty or representation about such information. It is submitted subject to the possibility of errors, omissions, change of price, rental or other conditions, prior sale, lease or financing, or withdrawal without notice. You and your tax and legal advisors should conduct your own investigation of the property and transaction.